

STORM IP CAMERA

STORM IP is a fixed focus, underwater HD camera. It is designed to be used on Ethernet based ROV with either fibre optic or DSL type Ethernet link.

The camera outputs an H.264 or MJPEG network video stream at 1080p or 720p. The video stream can then be decoded and viewed using the customer's choice of IP video software or network video decoder.



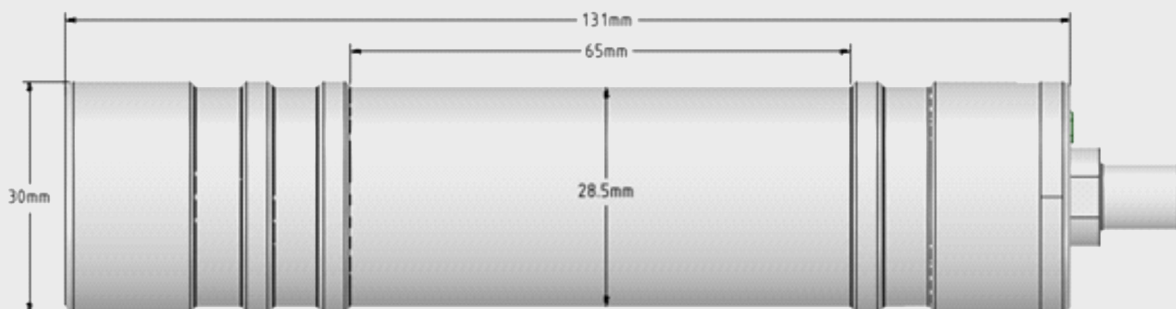
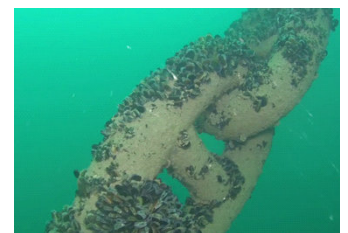
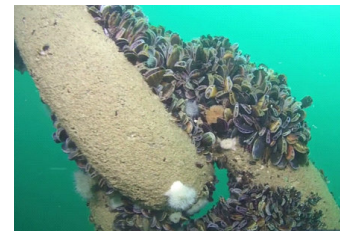
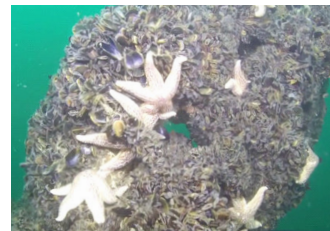
STORM IP from Atlantas Marine Ltd.

SPECIFICATION

Housing Material	Titanium Alloy
Window	Sapphire Glass
Lens	3.6mm F2.5
Diagonal Angle of View	77 degrees in water
Power	15-32v DC @ 2.5W
Weight in Air	230g
Weight in Water	180g
Length (exc. connector)	131mm
Diameter	30mm
Depth Rating	2000m
Connector	Teledyne IE55-12
Video Format	H.264 / MJPEG RTSP Network Stream
Video Resolution:	1080P (1920x1080) / 720P (1280x720)
Frame Rate:	25 / 30 FPS

KEY FEATURES

- View & Record HD Video in real time on PC
- Depth Rated to 2000m
- Small & Light
- 1080p/720p Video resolution
- Easy to Install
- Compatible with Ethernet based ROV systems



Mounting the Camera - STORM IP