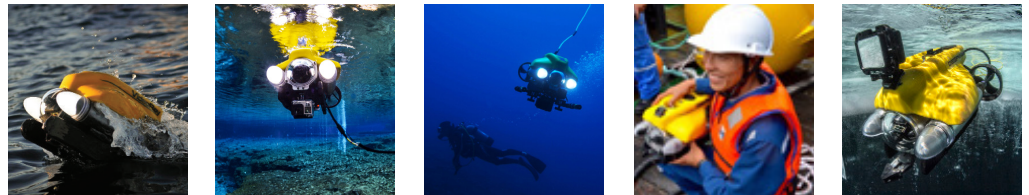


# Product Data Sheet

## Pro 4 Rack BASE



Rack Mount (FRONT)



Rack Mount (REAR)



The Pro 4 **Rack BASE** Remotely Operated Vehicle (ROV) System has been specifically configured for operations requiring Pro 4 ROV performance from a vessel or command center with rack mounted hardware. The Rack BASE ROV Control Panel features a completely redesigned 2U package that fits seamlessly into any existing rack.

The Pro 4 Rack BASE system includes a standard Pro 4 submersible, a Dell PC loaded with VideoRay Cockpit ROV control software, a 2U integrated control panel, and an industrial USB hand controller.

The VideoRay Rack BASE configuration is also configured to accept both the BlueView 2D imaging sonar (not included) as well as the Tritech Micron DST scanning sonar (not included). The user must also select a tether configuration for this system.

### SYSTEM INFORMATION

Depth Rating	305m (1,000 ft)
System Weight	25.8 kg (57lbs)
Communications Protocol	RS-485
Cases	Watertight Rugged Hard Case
Owners Manual	Hard Copy and Online Digital
Tool Kit	Basic Tool Kit
Warranty	2 Year Limited
Additional	BlueView Imaging and Tritech Micron Sonar Ready Sunshade

## SUBMERSIBLE

Length	37.5cm (14.75in)
Width	28.9cm (11.4in)
Height	22.3cm (8.75in)
Weight	6.1kg (13.5lb) [with Full Ballast Set]
Ballast	Ballast System with Complete Stainless Ballast Set

## Propulsion

Configuration	3 thrusters (2 horizontal/1 vertical)
Motor Type	Brushless
Thrust	21lb
Speed	4.2knots
Propeller	100mm Propellers/65mm Propeller

## Lighting

Type	Optimized LED Arrays
Number of Sources	2
Camera Coverage	Forward-looking Beam Spread covers entire range of Main Camera
Lumens	3,600 lumens per light (7,200 total)

## Integrated Sensors

Accelerometer	3D Tilt Compensated Compass
Leak Indicator	Internal Temperature
Depth Sensor	MEMS Gyro
Water Temperature	System Voltage

## CAMERA

Main	High Resolution - NTSC or PALFormat Color or Black & White Wide Dynamic Range Digital Slow Shutter White Balance 20+ Real Time Camera Settings
Sensitivity	
Color Mode	0.004 Lux
B&W Mode	0.001 Lux DSS
View Angle	90° Horizontal 140° Diagonal
Vertical Tilt	180° Control

## CONTROL PANEL

Power Requirements	100-240 VAC; 50,60 Hz, 800 Watt min
Length	38cm (15in)
Width	43cm (17in)
Height	8.9cm (3.5in)
Weight	7.7kg (17lb)
Computer Software	Dell i7 Rack Mount computer Complete suite of VideoRay cockpit control software User supplied
Main Display Controller	Industrial USB Hand Controller
Recording	Integrated Recording (.WMV, .AVI) One Button Hand-Controlled Video and Still-Image Recording Date, Time, Depth, Heading, Customized Text, Logo Digital or Analog Composite
Overlay	
Video Out	

## TETHER

Neutral Performance	Neutral bouyancy, smaller diameter
Standard Neutral	Neutral bouyancy
Negative Extension	Negative bouyancy

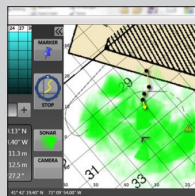
VideoRay tether is plug and play; the type and length are selected based on how you plan to use the ROV system. See above options and select.

## ACCESSORIES For more details, visit [www.videoray.com](http://www.videoray.com)



### Sonar

Blueprint  
Blueview (pictured)  
Tritech



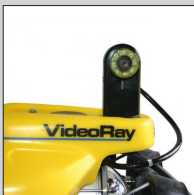
### Navigation & Positioning Systems

Non Acoustic Positioning  
USBL



### Manipulators

Single Axis  
Rotating (pictured)



### Auxillary Cameras

Second POV  
GoPro



### Non Destructive Testing (NDT)

Ultrasonic Thickness (pictured)  
Cathodic Protection  
Radiation Probe



### Shiphull Crawler



### Video Enhancement



### Automation

CoPilot RI by Seebyte



### Recovery and Retrieval Tool Kit