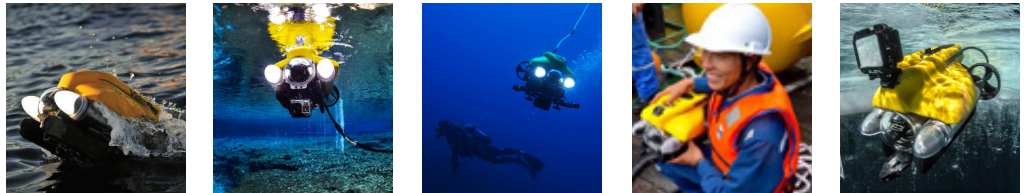


## Product Data Sheet

# Pro 4 Standard BASE



The Pro 4 **Standard BASE** Remotely Operated Vehicle (ROV) system has been specifically configured to quickly and effectively perform a variety of basic underwater tasks. The Standard BASE ROV system is a portable and cost-effective solution that can be deployed in minutes and operated by one person if necessary.

The Pro 4 Standard BASE system includes a Pro 4 submersible, Pro 4 Integrated Control Box (ICB) with a Dell i5 computer loaded with VideoRay Cockpit control software, and an industrial hand controller.

The Standard BASE configuration is ready to accept the majority of VideoRay accessories and can be upgraded to accept sonars. The user must also select a tether configuration for this system.

### SYSTEM INFORMATION

Depth Rating:	305m (1,000 ft)
System Weight:	38.5 kg (85lbs)
Communications Protocol:	RS-485
Cases:	2 Watertight Rugged Hard Cases
Owners Manual:	Hard Copy and Online Digital
Tool Kit:	Basic Tool Kit
Warranty:	2 Year Limited
Additional:	Sunshade



## SUBMERSIBLE

Length	37.5cm (14.75in)
Width	28.9cm (11.4in)
Height	22.3cm (8.75in)
Weight	6.1kg (13.5cm) [with Full Ballast Set]
Ballast	Ballast System with Complete Stainless Ballast Set

## Propulsion

Configuration	3 thrusters (2 horizontal/1 vertical)
Motor Type	Brushless
Thrust	21lb
Speed	4.2 knots
Propeller	100mm Propellers/65mm Propeller

## Lighting

Type	Optimized LED Arrays
Number of Sources	2
Camera Coverage	Forward-looking Beam Spread covers entire range of Main Camera
Lumens	3,600 lumens per light (7,200 total)

## Integrated Sensors

Accelerometer	3D Tilt Compensated Compass
Leak Indicator	Internal Temperature
Depth Sensor	MEMS Gyro
Water Temperature	System Voltage

## CAMERA

Main	High Resolution - NTSC or PAL Format Color or Black & White Wide Dynamic Range Digital Slow Shutter White Balance 20+ Real Time Camera Settings
Sensitivity	
Color Mode	0.004 Lux
B&W Mode	0.0001 Lux DSS
View Angle	90° Horizontal 140° Diagonal
Vertical Tilt	180° Control

## CONTROL PANEL

Power Requirements	100-240 VAC
Length	53cm (21in)
Width	43cm (17in)
Height	22cm (8.5in)
Weight	16kg (35lb)
Computer	Dell i5 with panel integration and tilt mount
Software	Complete suite of VideoRay cockpit control software
Main Display	Available as an Upgrade on BASE configurations
Controller	Industrial Programmable Hand Controller
Recording	Integrated Recording (.WMV, .AVI) One Button Hand-Controlled Video and Still-Image Recording Date, Time, Depth, Heading, Customized Text, Logo
Overlay	
Video Out	Digital or Analog Composite

## TETHER

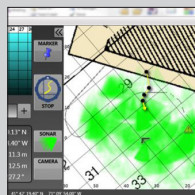
Neutral Performance	Neutral bouyancy, smaller diameter
Standard Neutral	Neutral bouyancy
Negative Extension	Negative bouyancy

VideoRay tether is plug and play; the type and length are selected based on how you plan to use the ROV system. See above options and select.

## ACCESSORIES For more details, visit [www.videoray.com](http://www.videoray.com)



**Sonar**  
Blueprint  
Blueview (pictured)  
Tritech



**Navigation & Positioning Systems**  
Non Acoustic Positioning  
USBL



**Manipulators**  
Single Axis  
Rotating (pictured)



**Auxillary Cameras**  
Second POV  
GoPro



**Non Destructive Testing (NDT)**  
Ultrasonic Thickness (pictured)  
Cathodic Protection  
Radiation Probe



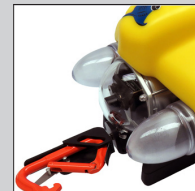
**Shiphull Crawler**



**Video Enhancement**



**Automation**  
CoPilot RI by Seebyte



**Recovery and Retrieval Tool Kit**